

# Forged Carbon Steel Fittings and Outlets



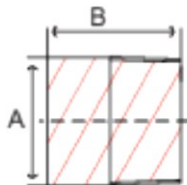
## **Specifications**

- Material ASTM SA105N/105, SS304, SS316, 316L,
- Thread dimensions conform to ASME B16.11
- Socket weld inserts conform to MSS-SP-79 ME B1.20.1
- Unions conform to MSS-SP-83
- Outlet fittings conform to MSS-SP-97
- Manufacturing facility is ISO 9001:2008
- Mill test certificate according to en10204-3.1
- Certificate of original

Class: 2000#, 3000# or 6000#

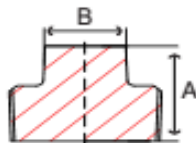
FORGED

**Fig. RP3 – Round Head Plug**



Size (In)	Part Number	A (mm)	B (mm)	Weight (kg)
1/2"	RP3-04-105	21.33	44.45	0.09
3/4"	RP3-06-105	26.92	44.45	0.18
1"	RP3-08-105	33.27	50.80	0.32
1.1/4"	RP3-10-105	41.14	50.80	0.54
1.1/2"	RP3-12-105	48.51	50.80	0.77
2"	RP3-16-105	60.45	63.50	1.45

**Fig. SQP3 – Square Head Plug**



Size (In)	Part Number	A (mm)	B (mm)	Weight (kg)
1/8"	SQP3-01-105	16.00	7.11	0.01
1/4"	SQP3-02-105	17.52	9.65	0.01
3/8"	SQP3-03-105	20.57	11.17	0.03
1/2"	SQP3-04-105	23.87	14.22	0.05
3/4"	SQP3-06-105	26.90	15.74	0.09
1"	SQP3-08-105	31.75	20.57	0.14
1.1/4"	SQP3-10-105	34.79	23.87	0.23
1.1/2"	SQP3-12-105	36.32	28.44	0.36
2"	SQP3-16-105	39.87	33.27	0.59
2.1/2"	SQP3-20-105	45.97	38.10	0.95
3"	SQP3-22-105	49.02	42.92	1.50
4"	SQP3-24-105	57.15	63.50	3.81

**Fig. HP3 – Hex Head Plug**



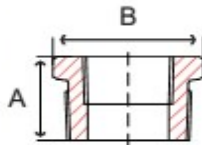
Size (In)	Part Number	A (mm)	B (mm)	Weight (kg)
1/8"	HP3-01-105	16.00	11.17	0.01
1/4"	HP3-02-105	17.52	15.74	0.03
3/8"	HP3-03-105	20.57	17.52	0.04
1/2"	HP3-04-105	22.09	22.35	0.05
3/4"	HP3-06-105	25.40	26.92	0.14
1"	HP3-08-105	28.70	35.05	0.18
1.1/4"	HP3-10-105	34.78	44.45	0.41
1.1/2"	HP3-12-105	36.32	50.80	0.59
2"	HP3-16-105	39.87	63.50	1.00
2.1/2"	HP3-20-105	45.97	76.20	1.77
3"	HP3-22-105	49.02	88.90	2.59
4"	HP3-24-105	57.15	117.34	5.17

# FORGED STEEL BUSHINGS

Class: 2000#, 3000# or 6000#

Fig. BMF3 – Hex Bushing

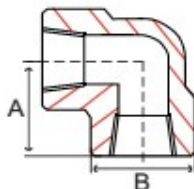
FORGED



Size (In)	Part Number	A (mm)	B (mm)	Weight (kg)
1/4 x 1/8	BMF3-0201-105	14.22	15.75	0.01
3/8 x 1/8	BMF3-0301-105	16.76	17.53	0.01
3/8 x 1/4	BMF3-0302-105	16.76	17.53	0.01
1/2 x 1/8	BMF3-0402-105	19.05	22.35	0.03
1/2 x 1/4	BMF3-0401-105	19.05	22.35	0.03
1/2 x 3/8	BMF3-0403-105	19.05	22.35	0.03
3/4 x 1/8	BMF3-0601-105	21.34	26.92	0.05
3/4 x 1/4	BMF3-0602-105	21.34	26.92	0.05
3/4 x 3/8	BMF3-0603-105	21.34	26.92	0.05
3/4 x 1/2	BMF3-0604-105	21.34	26.92	0.05
1 x 1/8	BMF3-0801-105	25.40	35.05	0.09
1 x 1/4?	BMF3-0802-105	25.40	35.05	0.09
1 x 3/8?	BMF3-0803-105	25.40	35.05	0.09
1 x 1/2?	BMF3-0804-105	25.40	35.05	0.09
1 x 3/4	BMF3-0806-105	25.40	35.05	0.09
1-1/4 x 1/8	BMF3-1001-105	27.69	44.45	0.36
1-1/4 x 1/4	BMF3-1002-105	27.69	44.45	0.14
1-1/4 x 3/8	BMF3-1003-105	27.69	44.45	0.14
1-1/4 x 1/2	BMF3-1004-105	27.69	44.45	0.23
1-1/4 x 3/4	BMF3-1006-105	27.69	44.45	0.23
1-1/4 x 1	BMF3-1008-105	27.69	44.45	0.23
1-1/2 x 1/8	BMF3-1201-105	28.45	50.80	0.59
1-1/2 x 1/4	BMF3-1202-105	28.45	50.80	0.59
1-1/2 x 3/8	BMF3-1203-105	28.45	50.80	0.59
1-1/2 x 1/2	BMF3-1204-105	28.45	50.80	0.45
1-1/2 x 3/4	BMF3-1206-105	28.45	50.80	0.36
1-1/2 x 1	BMF3-1208-105	28.45	50.80	0.32
1-1/2 x 1-1/4	BMF3-1210-105	28.45	50.80	0.32
2 x 1/4	BMF3-1602-105	30.99	63.50	0.36
2 x 3/8	BMF3-1603-105	30.99	63.50	0.82
2 x 1/2	BMF3-1604-105	30.99	63.50	0.77
2 x 3/4	BMF3-1606-105	30.99	63.50	0.73
2x 1	BMF3-1608-105	30.99	63.50	0.68
2 x 1-1/4	BMF3-1610-105	30.99	63.50	0.41
2 x 1-1/2	BMF3-1612-105	30.99	63.50	0.41
2-1/2 x 1/2	BMF3-2004-105	36.58	76.20	0.50
2-1/2 x 3/4	BMF3-2006-105	36.58	76.20	0.50
2-1/2 x 1	BMF3-2008-105	36.58	76.20	0.50
2-1/2 x 1-1/4	BMF3-2010-105	36.58	76.20	0.50
2-1/2 x 1-1/2	BMF3-2012-105	36.58	76.20	0.59
2-1/2 x 2	BMF3-2016-105	36.58	76.20	0.59
3 x 1/4	BMF3-2202-105	38.86	88.90	2.40
3 x 1/2	BMF3-2204-105	38.86	88.90	2.36
3 x 3/4	BMF3-2206-105	38.86	88.90	2.09
3x 1	BMF3-2208-105	38.86	88.90	2.27
3 x 1-1/4	BMF3-2210-105	38.86	88.90	1.54
3 x 1-1/2	BMF3-2212-105	38.86	88.90	1.41
3x 2	BMF3-2216-105	38.86	88.90	1.23
3 x 2-1/2	BMF3-2220-105	38.86	88.90	1.04
4x 1 ?	BMF3-2408-105	44.45	117.35	4.26
4 x 1-1/4	BMF3-2410-105	44.45	117.35	3.86
4 x 1-1/2	BMF3-2412-105	44.45	117.35	3.45
4x 2?	BMF3-2416-105	44.45	117.35	3.04
4 x 2-1/2	BMF3-2420-105	44.45	117.35	2.59
4 x 3	BMF3-2422-105	44.45	117.35	2.132

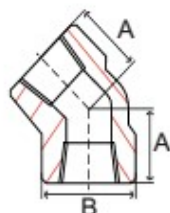
FORGED

### Fig. SLF2 – Thread Elbow 90 deg



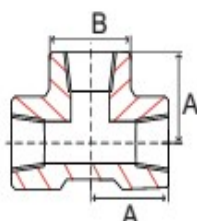
Size (in)	Number	A (mm)	B (mm)	Weight (kg)
1/8	SLF2-01-105	20.57	22.35	0.09
1/4	SLF2-02-105	20.57	22.35	0.09
3/8	SLF2-03-105	24.64	25.40	0.14
1/2	SLF2-04-105	28.45	33.27	0.23
3/4	SFL2-06-105	33.27	38.10	0.32
1	SLF2-08-105	38.10	45.97	0.50
1-1/4	SLF2-10-105	44.45	55.63	0.82
1-1/2	SLF2-12-105	50.80	61.98	1.04
2	SLF2-16-105	60.45	75.44	1.68
2-1/2	SLF2-20-105	76.20	91.95	3.13
3	SLF2-22-105	85.85	109.47	4.54
4	SLF2-24-105	106.43	146.05	10.21

### Fig. SLS2 – Thread Elbow 45 deg



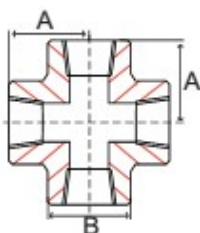
Size (In)	Part Number	A (mm)	B (mm)	Weight (kg)
1/4	SLS2-02-105	17.53	22.35	0.09
3/8	SLS2-03-105	19.05	25.40	0.09
1/2	SLS2-04-105	22.35	33.27	0.18
3/4	SLS2-06-105	25.40	38.10	0.23
1	SLS2-08-105	28.45	45.97	0.41
1-1/4	SLS2-10-105	33.27	55.63	0.64
1-1/2	SLS2-12-105	35.05	61.98	0.82
2	SLS2-16-105	42.93	75.44	1.41
2-1/2	SLS2-20-105	52.32	91.95	3.45
3	SLS2-22-105	63.50	109.47	5.40
4	SLS2-24-105	79.25	146.05	8.94

### Fig. STF2 – Thread Equal Tee



Size (In)	Part Number	A (mm)	B (mm)	Weight (kg)
1/4	STF2-02-105	20.57	22.35	0.09
3/8	STF2-03-105	24.64	25.40	0.14
1/2	STF2-04-105	28.45	33.27	0.27
3/4	STF2-06-105	33.27	38.10	0.41
1	STF2-08-105	38.10	45.97	0.68
1-1/4	SFT2-10-105	44.45	55.63	1.04
1-1/2	STF2-12-105	50.80	61.98	1.36
2	STF2-16-105	60.45	75.44	2.13
2-1/2	STF2-20-105	76.20	91.95	4.08
3	STF2-22-105	85.85	109.47	6.08
4	STF2-24-105	106.43	146.05	14.70

### Fig. FX2 – Thread Cross



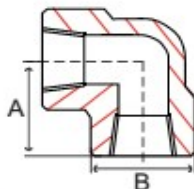
Size (In)	Part Number	A (mm)	B (mm)	Weight (kg)
3/8	FX2-03-105	24.64	25.40	0.18
1/2	FX2-04-105	28.45	33.27	0.36
3/4	FX2-06-105	33.27	38.10	0.50
1	FX2-08-105	38.10	45.97	0.73
1-1/4	FX2-10-105	44.45	55.63	1.09
1-1/2	FX2-12-105	50.80	61.98	1.59
2	FX2-16-105	60.45	75.44	2.59
2-1/2	FX2-20-105	76.20	91.95	4.72
3	FX2-22-105	85.85	109.47	6.80



# FORGED STEEL THREAD FITTING 3000#

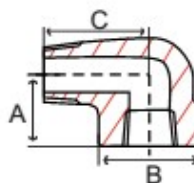
VIET THUONG

FORGED



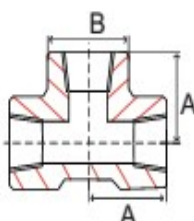
**Fig. SLF3 – Thread Elbow 90 deg**

Size (in)	Number	A (mm)	B (mm)	Weight (kg)
1/8	SLF3-01-105	20.57	22.35	0.09
1/4	SLF3-02-105	24.64	25.40	0.32
3/8	SLF3-03-105	28.45	33.27	0.27
1/2	SLF3-04-105	33.27	38.10	0.41
3/4	SFL3-06-105	38.10	45.97	0.68
1	SLF3-08-105	44.45	55.63	1.00
1-1/4	SLF3-10-105	50.80	61.98	1.41
1-1/2	SLF3-12-105	60.45	75.44	2.18
2	SLF3-16-105	63.50	84.07	2.45
2-1/2	SLF3-20-105	82.55	101.60	5.99
3	SLF3-22-105	95.25	120.65	8.85
4	SLF3-24-105	114.30	152.40	14.83



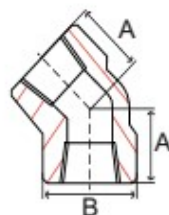
**Fig. FML3 – Street Elbow 90 deg**

Size (In)	Part Number	A (mm)	B (mm)	C (mm)	Weight (kg)
1/8	FML3-01-105	24.64	25.40	14.40	0.09
1/4	FML3-02-105	24.64	25.40	14.40	0.09
3/8	FML3-03-105	28.45	33.27	17.28	0.18
1/2	FML3-04-105	33.27	38.10	19.47	0.27
3/4	FML3-06-105	38.10	45.97	22.35	0.50
1	FML3-08-105	44.45	55.63	26.61	1.00
1-1/4	FML3-10-105	50.80	61.98	30.99	1.09
1-1/2	FML3-12-105	60.45	75.44	32.37	2.00
2	FML3-16-105	63.50	84.07	38.94	2.90



**Fig. STF3 – Thread Equal Tee**

Size (In)	Part Number	A (mm)	B (mm)	Weight (kg)
1/8	STF3-01-105	20.57	22.35	0.09
1/4	SFT3-02-105	24.64	25.40	0.18
3/8	SFT3-03-105	28.45	33.27	0.36
1/2	SFT3-04-105	33.27	38.10	0.54
3/4	SFT3-06-105	38.10	45.97	0.91
1.00	SFT3-08-105	44.45	55.63	1.45
1-1/4	SFT3-10-105	50.80	61.98	1.72
1-1/2	SFT3-12-105	60.45	75.44	3.27
2	SFT3-16-105	63.50	84.07	3.49
2-1/2	SFT3-20-105	82.55	101.60	6.99
3	SFT3-22-105	95.25	120.65	10.16
4	SFT3-24-105	114.30	152.40	17.96



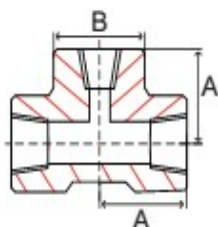
**Fig. SLS3 – Thread Elbow 45 deg**

Size (in)	Number	A (mm)	B (mm)	Weight (kg)
1/8	SLS3-02-105	16.76	21.84	0.09
1/4	SLS3-03-105	19.05	25.40	0.09
3/8	SLS3-04-105	22.35	33.27	0.23
1/2	SLS3-06-105	25.40	38.10	0.32
3/4	SLS3-08-105	28.45	45.97	0.54
1	SLS3-10-105	33.27	55.63	0.91
1-1/4	SLS3-12-105	35.05	61.98	1.00
1-1/2	SLS3-16-105	42.93	75.44	2.04
2	SLS3-20-105	43.69	84.07	2.22
2-1/2	SLS3-22-105	52.32	101.60	3.67
3	SLS3-24-105	63.50	120.65	5.94
4	SLS3-24-105	79.25	152.40	8.94



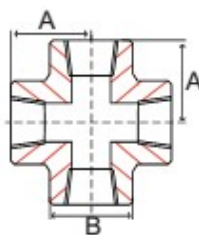
FORGED

### Fig. TRT3 – Thread Reducing Tee



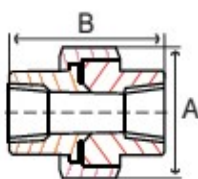
Size (in)	Part Number	A (mm)	B (mm)	(kg)
3/4 x 1/2	TRT3-0604-105	38.10	45.97	0.82
1 x 1/2	TRT3-0804-105	44.45	55.63	1.32
1 x 3/4	TRT3-0806-105	44.45	55.63	1.32
1-1/4 x 1/2	TRT3-1004-105	50.80	61.98	1.63
1-1/4 x 3/4	TRT3-1006-105	50.80	61.98	1.63
1-1/4 x 1	TRT3-1008-105	50.80	61.98	1.63
1-1/2 x 1/2	TRT3-1204-105	60.45	75.44	3.08
1-1/2 x 3/4	TRT3-1206-105	60.45	75.44	3.08
1-1/2 x 1	TRT3-1208-105	60.45	75.44	3.08
1-1/2 x 1-1/4	TRT3-1210-105	60.45	75.44	3.08
2 x 1/2	TRT3-1604-105	63.50	84.07	3.18
2 x 3/4	TRT3-1606-105	63.50	84.07	3.18
2 x 1	TRT3-1608-105	63.50	84.07	3.18
2 x 1-1/4	TRT3-1610-105	63.50	84.07	3.18
2 x 1-1/2	TRT3-1612-105	63.50	84.07	3.18

### Fig. FX3 - Thread Cross



Size (In)	Part Number	A (mm)	B (mm)	Weight (kg)
1/8	FX3-01-105	20.57	22.35	0.18
1/4	FX3-02-105	24.64	25.40	0.23
3/8	FX3-03-105	28.45	33.27	0.41
1/2	FX3-04-105	33.27	38.10	0.64
3/4	FX3-06-105	38.10	45.97	1.13
1.00	FX3-08-105	44.45	55.63	1.59
1-1/4	FX3-10-105	50.80	61.98	1.86
1-1/2	FX3-12-105	60.45	75.44	2.95
2.00	FX3-16-105	63.50	84.07	3.67
2-1/2	FX3-20-105	82.55	101.60	18.05
3.00	FX3-22-105	95.25	120.65	9.98
4.00	FX3-24-105	114.30	152.40	22.14

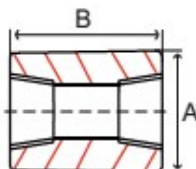
### Fig. FFU3 – Thread Union



Size (in)	Number	A (mm)	B (mm)	Weight (kg)
1/8	FFU3-01-105	37.59	42.16	0.27
1/4	FFU3-02-105	37.59	42.16	0.27
3/8	FFU3-03-105	42.16	46.48	0.23
1/2	FFU3-04-105	49.02	50.80	0.32
3/4	FFU3-06-105	60.45	58.67	0.45
1	FFU3-08-105	70.61	61.47	0.73
1-1/4	FFU3-10-105	85.09	72.64	1.00
1-1/2	FFU3-12-105	93.98	76.20	1.59
2	FFU3-16-105	112.27	88.90	2.40
2-1/2	FFU3-20-105	132.59	107.95	3.63
3	FFU3-22-105	156.21	112.27	5.26

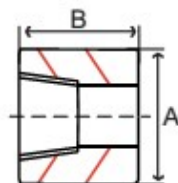
FORGED

### Fig. FCF3 – Thread Full Coupling



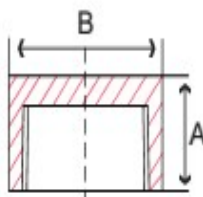
Size (in)	Part Number	A (mm)	B (mm)	Weight (kg)
1/8	FCF3-01-105	15.75	31.75	0.05
1/4	FCF3-02-105	19.05	35.05	0.05
3/8	FCF3-03-105	22.35	38.10	0.05
1/2	FCF3-04-105	28.45	47.75	0.09
3/4	FCF3-06-105	33.78	50.80	0.18
1	FCF3-08-105	44.45	60.45	0.41
1-1/4	FCF3-10-105	57.15	66.55	0.77
1-1/2	FCF3-12-105	63.50	79.25	1.04
2	FCF3-16-105	76.20	85.85	1.36
2-1/2	FCF3-20-105	91.95	91.95	2.27
3	FCF3-22-105	107.95	107.95	3.36
4	FCF3-24-105	139.70	120.65	6.26

### Fig. HCF3 - Thread Half Coupling



Size (in)	Part Number	A (mm)	B (mm)	Weight (kg)
1/8	HCF3-01-105	15.75	15.75	0.02
1/4	HCF3-02-105	19.05	17.53	0.02
3/8	HCF3-03-105	22.35	19.05	0.03
1/2	HCF3-04-105	28.45	23.88	0.05
3/4	HCF3-06-105	33.78	25.40	0.09
1	HCF3-08-105	44.45	29.72	0.23
1-1/4	HCF3-10-105	57.15	33.27	0.32
1-1/2	HCF3-12-105	63.50	39.62	0.50
2	HCF3-16-105	76.20	42.42	0.68
2-1/2	HCF3-20-105	91.95	45.97	1.09
3	HCF3-22-105	107.95	53.85	1.68
4	HCF3-24-105	139.70	60.20	3.08

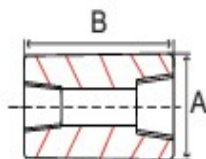
### Fig. RCF3 – Thread Round Cap



Size (in)	Part Number	A (mm)	B (mm)	Weight (kg)
1/8	RCF3-01-105	15.75	15.75	0.02
1/4	RCF3-02-105	19.05	17.53	0.02
3/8	RCF3-03-105	22.35	19.05	0.03
1/2	RCF3-04-105	28.45	23.88	0.05
3/4	RCF3-06-105	33.78	25.40	0.09
1	RCF3-08-105	44.45	29.72	0.23
1-1/4	RCF3-10-105	57.15	33.27	0.32
1-1/2	RCF3-12-105	63.50	39.62	0.50
2	RCF3-16-105	76.20	42.42	0.68
2-1/2	RCF3-20-105	91.95	45.97	1.09
3	RCF3-22-105	107.95	53.85	1.68
4	RCF3-24-105	139.70	60.20	3.08

## Fig. RDF3 – Thread Reducing Coupling

FORGED



Size (in)	Part Number	A (mm)	B (mm)	Weight (kg)
1/2 x 1/4	RDF3-0401-105	28.96	32.26	0.09
1/2 x 3/8	RDF3-0403-105	28.96	32.26	0.09
3/4 x 1/8	RDF3-0602-105	35.05	38.10	0.18
3/4 x 1/4	RDF3-0601-105	35.05	38.10	0.18
3/4 x 3/8	RDF3-0603-105	35.05	38.10	0.18
3/4 x 1/2	RDF3-0604-105	35.05	38.10	0.18
1 x 1/4	RDF3-0801-105	38.10	45.72	0.23
1 x 3/8	RDF3-0803-105	38.10	45.72	0.23
1 x 1/2	RDF3-0804-105	38.10	45.72	0.23
1 x 3/4	RDF3-0806-105	38.10	45.72	0.23
1-1/4 x 1/2	RDF3-1004-105	38.10	56.64	0.45
1-1/4 x 3/4	RFD3-1006-105	38.10	56.64	0.50
1-1/4 x 1	RDF3-1008-105	38.10	56.64	0.45
1-1/2 x 1/4	RDF3-1201-105	38.10	64.77	0.59
1-1/2 x 3/8	RDF3-1202-105	38.10	64.77	0.91
1-1/2 x 1/2	RDF3-1204-105	38.10	64.77	0.59
1-1/2 x 3/4	RDF3-1206-105	38.10	64.77	0.59
1-1/2 x 1	RDF3-1208-105	38.10	64.77	0.73
1-1/2 x 1-1/4	RDF3-1210-105	38.10	64.77	0.59
2 x 1/4	RDF3-1601-105	50.80	75.18	1.18
2 x 3/8	RDF3-1603-105	50.80	75.18	1.00
2 x 1/2	RDF3-2604-105	50.80	75.18	1.18
2 x 3/4	RDF3-1606-105	50.80	75.18	1.04
2 x 1	RDF3-1608-105	50.80	75.18	0.95
2 x 1-1/4	RDF3-1610-105	50.80	75.18	0.95
2 x 1-1/2	RDF3-1612-105	50.80	75.18	1.18
2-1/2 x 1/2	RDF3-2004-105	50.80	92.46	1.91
2-1/2 x 3/4	RDF3-2006-105	50.80	92.46	1.59
2-1/2 x 1	RDF3-2008-105	50.80	92.46	1.41
2-1/2 x 1-1/4	RDF3-2010-105	50.80	92.46	1.41
2-1/2 x 1-1/2	RFD3-2012-105	50.80	92.46	1.41
2-1/2 x 2	RDF3-2016-105	50.80	92.46	1.41
3 x 1	RDF3-2208-105	50.80	108.46	1.86
3 x 1-1/4	RDF3-2210-105	50.80	108.46	2.00
3 x 1-1/2	RDF3-2212-105	50.80	108.46	1.86
3 x 2	RDF3-2216-105	50.80	108.46	1.86
3 x 2-1/2	RDF3-2220-105	50.80	108.46	1.86
4 x 1-1/2	RDF3-2412-105	57.15	137.16	2.72
4 x 2	RDF3-2416-105	57.15	137.16	2.68
4 x 2-1/2	RDF3-2420-105	57.15	137.16	2.63
4 x 3	RDF3-2422-105	57.15	137.16	2.59



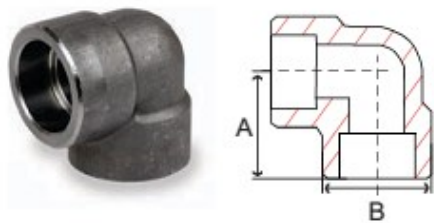


# FORGED STEEL SOCKET WELD FITTING 3000#

VIET THUONG

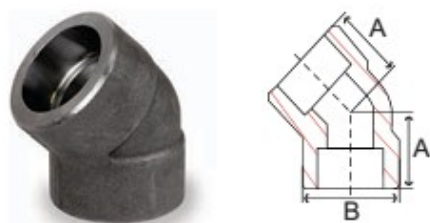
FORGED

### Fig. SWL3 – SW Elbow 90deg



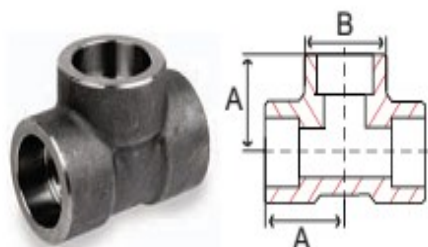
Size (in)	Part Number	A (mm)	B (mm)	Weight (kg)
1/8	SWL3-01-105	20.83	17.27	0.09
1/4	SWL3-02-105	20.83	20.83	0.14
3/8	SWL3-03-105	23.11	24.89	0.09
1/2	SWL3-04-105	25.40	30.48	0.18
3/4	SWL3-06-105	31.75	35.81	0.32
1	SWL3-08-105	35.05	44.20	0.50
1-1/4	SWL3-10-105	39.62	53.34	0.82
1-1/2	SWL3-12-105	44.45	59.94	1.04
2	SWL3-16-105	53.85	73.41	1.68
2-1/2	SWL3-20-105	56.90	89.92	3.18
3	SWL3-22-105	72.90	106.93	5.35
4	SWL3-24-105	85.60	134.62	10.93

### Fig. SWL345 – SW Elbow 45 deg



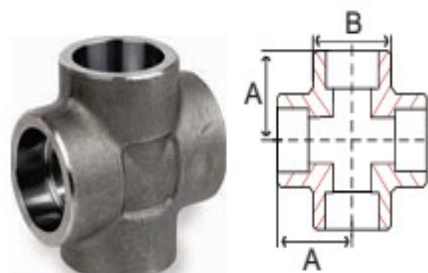
Size (in)	Part Number	A (mm)	B (mm)	Weight (kg)
1/8	SWL345-01-105	17.53	17.27	0.14
1/4	SWL345-02-105	17.53	20.83	0.14
3/8	SWL345-03-105	17.53	24.89	0.09
1/2	SWL345-04-105	20.83	30.48	0.18
3/4	SWL345-06-105	25.40	35.81	0.27
1	SWL345-08-105	26.92	44.20	0.41
1-1/4	SWL345-10-105	30.23	53.34	0.68
1-1/2	SWL345-12-105	33.27	59.94	0.77
2	SWL345-16-105	41.15	73.41	1.32
2-1/2	SWL345-20-105	44.20	89.92	2.49
3	SWL345-22-105	47.50	106.93	5.08
4	SWL345-24-105	60.20	134.62	9.39

### Fig. SWT3 – SW Equal Tee



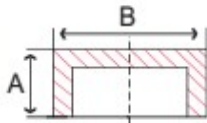
Size (in)	Part Number	A (mm)	B (mm)	Weight (kg)
1/8	SWT3-01-105	20.83	17.27	0.09
1/4	SWT3-02-105	20.83	20.83	0.05
3/8	SWT3-03-105	23.11	24.89	0.14
1/2	SWT3-04-105	25.40	30.48	0.27
3/4	SWT3-06-105	31.75	35.81	0.41
1	SWT3-08-105	35.05	44.20	0.64
1-1/4	SWT3-10-105	39.62	53.34	1.00
1-1/2	SWT3-12-105	44.45	59.94	1.32
2	SWT3-16-105	53.85	73.41	2.00
2-1/2	SWT3-20-105	56.90	89.92	3.95
3	SWT3-22-105	72.90	106.93	5.90
4	SWT3-24-105	85.60	134.62	17.87

### Fig. SWX3 – SW Cross



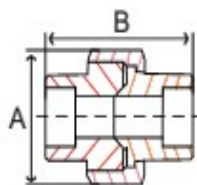
Size (in)	Part Number	A (mm)	B (mm)	Weight (kg)
1/8	FCF3-01-105	15.75	31.75	0.05
1/4	FCF3-02-105	19.05	35.05	0.05
3/8	FCF3-03-105	22.35	38.10	0.05
1/2	FCF3-04-105	28.45	47.75	0.09
3/4	FCF3-06-105	33.78	50.80	0.18
1	FCF3-08-105	44.45	60.45	0.41
1-1/4	FCF3-10-105	57.15	66.55	0.77
1-1/2	FCF3-12-105	63.50	79.25	1.04
2	FCF3-16-105	76.20	85.85	1.36
2-1/2	FCF3-20-105	91.95	91.95	2.27
3	FCF3-22-105	107.95	107.95	3.36
4	FCF3-24-105	139.70	120.65	6.26

FORGED



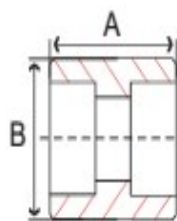
### Fig. HCF3 – SW Round Cap

Size (in)	Part Number	A (mm)	B (mm)	Weight (kg)
1/8	HCF3-01-105	15.75	15.75	0.02
1/4	HCF3-02-105	19.05	17.53	0.02
3/8	HCF3-03-105	22.35	19.05	0.03
1/2	HCF3-04-105	28.45	23.88	0.05
3/4	HCF3-06-105	33.78	25.40	0.09
1	HCF3-08-105	44.45	29.72	0.23
1-1/4	HCF3-10-105	57.15	33.27	0.32
1-1/2	HCF3-12-105	63.50	39.62	0.50
2	HCF3-16-105	76.20	42.42	0.68
2-1/2	HCF3-20-105	91.95	45.97	1.09
3	HCF3-22-105	107.95	53.85	1.68
4	HCF3-24-105	139.70	60.20	3.08



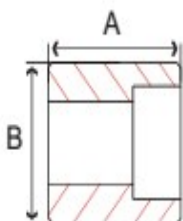
### Fig. RCF3 – SW Union

Size (in)	Part Number	A (mm)	B (mm)	Weight (kg)
1/8	RCF3-01-105	15.75	15.75	0.02
1/4	RCF3-02-105	19.05	17.53	0.02
3/8	RCF3-03-105	22.35	19.05	0.03
1/2	RCF3-04-105	28.45	23.88	0.05
3/4	RCF3-06-105	33.78	25.40	0.09
1	RCF3-08-105	44.45	29.72	0.23
1-1/4	RCF3-10-105	57.15	33.27	0.32
1-1/2	RCF3-12-105	63.50	39.62	0.50
2	RCF3-16-105	76.20	42.42	0.68
2-1/2	RCF3-20-105	91.95	45.97	1.09
3	RCF3-22-105	107.95	53.85	1.68
4	RCF3-24-105	139.70	60.20	3.08



### Fig. FCF3 – SW Full Coupling

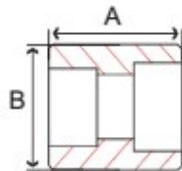
Size (in)	Part Number	A (mm)	B (mm)	Weight (kg)
1/8	FCF3-01-105	15.75	31.75	0.05
1/4	FCF3-02-105	19.05	35.05	0.05
3/8	FCF3-03-105	22.35	38.10	0.05
1/2	FCF3-04-105	28.45	47.75	0.09
3/4	FCF3-06-105	33.78	50.80	0.18
1	FCF3-08-105	44.45	60.45	0.41
1-1/4	FCF3-10-105	57.15	66.55	0.77
1-1/2	FCF3-12-105	63.50	79.25	1.04
2	FCF3-16-105	76.20	85.85	1.36
2-1/2	FCF3-20-105	91.95	91.95	2.27
3	FCF3-22-105	107.95	107.95	3.36
4	FCF3-24-105	139.70	120.65	6.26



### Fig. HCF3 – SW Half Coupling

Size (in)	Part Number	A (mm)	B (mm)	Weight (kg)
1/8	HCF3-01-105	15.75	15.75	0.02
1/4	HCF3-02-105	19.05	17.53	0.02
3/8	HCF3-03-105	22.35	19.05	0.03
1/2	HCF3-04-105	28.45	23.88	0.05
3/4	HCF3-06-105	33.78	25.40	0.09
1	HCF3-08-105	44.45	29.72	0.23
1-1/4	HCF3-10-105	57.15	33.27	0.32
1-1/2	HCF3-12-105	63.50	39.62	0.50
2	HCF3-16-105	76.20	42.42	0.68
2-1/2	HCF3-20-105	91.95	45.97	1.09
3	HCF3-22-105	107.95	53.85	1.68
4	HCF3-24-105	139.70	60.20	3.08

**Fig. RCSW3 – SW reducing Coupling**

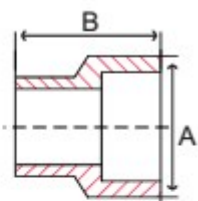


FORGED

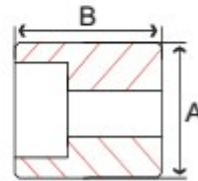
Size (in)	Part Number	A (mm)	B (mm)	Weight (kg)
1/2 x 1/4	RDSW3-0401-105	28.96	32.26	0.09
1/2 x 3/8	RDSW3-0403-105	28.96	32.26	0.09
3/4 x 1/8	RDSW3-0602-105	35.05	38.10	0.18
3/4 x 1/4	RDSW3-0601-105	35.05	38.10	0.18
3/4 x 3/8	RDSW3-0603-105	35.05	38.10	0.18
3/4 x 1/2	RDSW3-0604-105	35.05	38.10	0.18
1 x 1/4	RDSW3-0801-105	38.10	45.72	0.23
1 x 3/8	RDSW3-0803-105	38.10	45.72	0.23
1 x 1/2	RDSW3-0804-105	38.10	45.72	0.23
1 x 3/4	RDSW3-0806-105	38.10	45.72	0.23
1-1/4 x 1/2	RDSW3-1004-105	38.10	56.64	0.45
1-1/4 x 3/4	RFD3-1006-105	38.10	56.64	0.50
1-1/4 x 1	RDSW3-1008-105	38.10	56.64	0.45
1-1/2 x 1/4	RDSW3-1201-105	38.10	64.77	0.59
1-1/2 x 3/8	RDSW3-1202-105	38.10	64.77	0.91
1-1/2 x 1/2	RDSW3-1204-105	38.10	64.77	0.59
1-1/2 x 3/4	RDSW3-1206-105	38.10	64.77	0.59
1-1/2 x 1	RDSW3-1208-105	38.10	64.77	0.73
1-1/2 x 1-1/4	RDSW3-1210-105	38.10	64.77	0.59
2 x 1/4	RDSW3-1601-105	50.80	75.18	1.18
2 x 3/8	RDSW3-1603-105	50.80	75.18	1.00
2 x 1/2	RDSW3-2604-105	50.80	75.18	1.18
2 x 3/4	RDSW3-1606-105	50.80	75.18	1.04
2 x 1	RDSW3-1608-105	50.80	75.18	0.95
2 x 1-1/4	RDSW3-1610-105	50.80	75.18	0.95
2 x 1-1/2	RDSW3-1612-105	50.80	75.18	1.18
2-1/2 x 1/2	RDSW3-2004-105	50.80	92.46	1.91
2-1/2 x 3/4	RDSW3-2006-105	50.80	92.46	1.59
2-1/2 x 1	RDSW3-2008-105	50.80	92.46	1.41
2-1/2 x 1-1/4	RDSW3-2010-105	50.80	92.46	1.41
2-1/2 x 1-1/2	RFD3-2012-105	50.80	92.46	1.41
2-1/2 x 2	RDSW3-2016-105	50.80	92.46	1.41
3 x 1	RDSW3-2208-105	50.80	108.46	1.86
3 x 1-1/4	RDSW3-2210-105	50.80	108.46	2.00
3 x 1-1/2	RDSW3-2212-105	50.80	108.46	1.86
3 x 2	RDSW3-2216-105	50.80	108.46	1.86
3 x 2-1/2	RDSW3-2220-105	50.80	108.46	1.86
4 x 1-1/2	RDSW3-2412-105	57.15	137.16	2.72
4 x 2	RDSW3-2416-105	57.15	137.16	2.68
4 x 2-1/2	RDSW3-2420-105	57.15	137.16	2.63
4 x 3	RDSW3-2422-105	57.15	137.16	2.59

Fig. SWRI3 – SW reducing Insert

FORGED



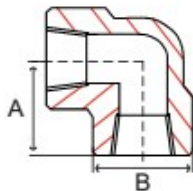
Type 1



Type 2

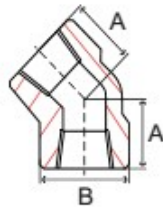
Size (In)	Part Number	A (mm)	B (mm)	Type	Weight (kg)
1/2 x 1/4	SWRI3-0402-105	31.75	31.24	1	0.0907
1/2 x 3/8	SWRI3-0403-105	31.75	31.24	1	0.0907
3/4 x 1/4	SWRI3-0602-105	26.92	37.08	1	0.1361
3/4 x 3/8	SWRI3-0603-105	26.92	37.08	2	0.1361
3/4 x 1/2	SWRI3-0604-105	34.04	37.08	2	0.1361
1 x 1/4	SWRI3-0802-105	28.45	45.21	2	0.2268
1 x 3/8	SWRI3-0803-105	28.45	45.21	2	0.2268
1 x 1/2	SWRI3-0804-105	28.45	45.21	2	0.1361
1 x 3/4	SWRI3-0806-105	38.61	45.21	1	0.2268
1-1/4 x 1/4	SWRI3-1002-105	31.75	54.86	2	0.4082
1-1/4 x 3/8	SWRI3-1003-105	31.75	54.86	2	0.4082
1-1/4 x 1/2	SWRI3-1004-105	31.75	54.86	2	0.4082
1-1/4 x 3/4	SWRI3-1006-105	31.75	54.86	2	0.4082
1-1/4 x 1	SWRI3-1008-105	40.13	54.86	1	0.4082
1-1/2 x 3/8	SWRI3-1203-105	33.27	61.47	2	0.5443
1-1/2 x 1/2	SWRI3-1204-105	33.27	61.47	2	0.4082
1-1/2 x 3/4	SWRI3-1206-105	33.27	61.47	2	0.5443
1-1/2 x 1	SWRI3-1208-105	33.27	61.47	2	0.2722
1-1/2 x 1-1/4	SWRI3-1210-105	43.18	61.47	1	0.5443
2 x 1/2	SWRI3-1604-105	38.10	75.18	2	0.8618
2 x 3/4	SWRI3-1606-105	38.10	75.18	2	0.8618
2 x 1	SWRI3-1608-105	38.10	75.18	2	0.8618
2 x 1-1/4	SWRI3-1610-105	38.10	75.18	2	0.8618
2 x 1-1/2	SWRI3-1612-105	45.97	75.18	1	0.8618
2-1/2 x 1/2	SWRI3-2004-105	53.85	93.98	2	1.1793
2-1/2 x 3/4	SWRI3-2006-105	53.85	93.98	2	1.1793
2-1/2 x 1	SWRI3-2008-105	53.85	93.98	2	1.1793
2-1/2 x 1-1/4	SWRI3-2010-105	53.85	93.98	2	1.1793
2-1/2 x 1-1/2	SWRI3-2012-105	53.85	93.98	2	1.1793
2-1/2 x 2	SWRI3-2016-105	63.50	93.98	1	1.1793
3 x 1	SWRI3-2208-105	47.50	109.22	2	1.7690
3 x 1-1/4	SWRI3-2210-105	47.50	109.22	2	1.7690
3 x 1-1/2	SWRI3-2212-105	47.50	109.22	2	1.8597
3 x 2	SWRI3-2216-105	50.80	109.22	2	1.8597
4 x 2-1/2	SWRI3-2420-105	57.15	136.91	2	2.6308

FORGED



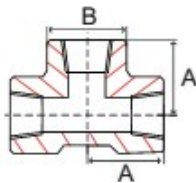
**Fig. SLF6 – Thread Elbow 90deg, class 6000#**

Size (in)	Part Number	A (mm)	B (mm)	Weight (kg)
1/2	SLF6-04-105	38.10	45.97	0.77
3/4	SLF6-06-105	44.45	55.63	1.27
1	SLF6-08-105	50.80	61.98	1.59
1-1/4	SLF6-10-105	60.45	75.44	2.90
1-1/2	SLF6-12-105	63.50	84.07	3.76
2	SLF6-16-105	82.55	101.60	7.30
3	SLF6-22-105	104.90	144.53	16.42



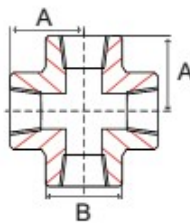
**Fig. SLE6 – Thread Elbow 45deg, class 6000#**

Size (in)	Part Number	A (mm)	B (mm)	Weight (kg)
1/2	SLE6-04-105	28.45	45.97	0.59
3/4	SLE6-06-105	33.27	55.63	1.04
1	SLE6-08-105	35.05	61.98	1.22
1-1/4	SLE6-10-105	42.93	75.44	2.22
1-1/2	SLE6-12-105	43.69	84.07	2.49
2	SLE6-16-105	52.32	101.60	4.35
2-1/2	SLE6-20-105	63.50	119.89	6.99



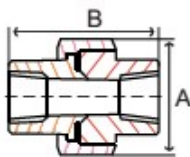
**Fig. STF6 – Thread Equal Tee, class 6000#**

Size (in)	Part Number	A (mm)	B (mm)	Weight (kg)
1/4	STF6-02-105	32.77	37.59	0.59
3/8	STF6-03-105	38.10	45.97	0.95
1/2	STF6-04-105	44.45	55.63	1.63
3/4	STF6-06-105	50.80	61.98	2.13
1	STF6-08-105	60.45	75.44	3.45
1-1/4	STF6-10-105	63.50	84.07	4.67
1-1/2	STF6-12-105	82.55	101.60	7.85
2	STF6-16-105	94.23	119.89	13.06
3	SFT6-22-105	104.90	144.78	22.45



**Fig. FX6 – Thread Cross, class 6000#**

Size (in)	Part Number	A (mm)	B (mm)	Weight (kg)
1/2	FX6-04-105	38.10	45.97	1.00
3/4	FX6-06-105	44.45	55.63	1.63
1	FX6-08-105	50.80	61.98	1.72
1-1/4	FX6-10-105	60.45	75.44	3.99
2	FX6-16-105	82.55	101.60	8.98
2-1/2	FX6-20-105	94.23	119.89	14.97



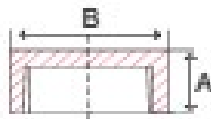
**Fig. FFU6 – Thread Union, class 6000#**

Size (in)	Part Number	A (mm)	B (mm)	Weight (kg)
1-1/2	FFU6-12-105	88.90	112.27	2.22
2	FFU6-16-105	104.65	132.84	3.80



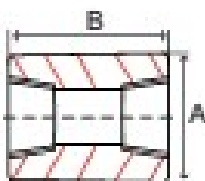
FORGED

**Fig. RCF6 – Thread Round Cap, class 6000#**



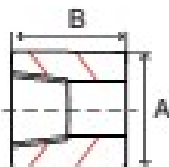
Size (in)	Part Number	A (mm)	B (mm)	Weight (kg)
1/4	RCF6-02-105	26.92	25.40	0.06
3/8	RCF6-03-105	26.92	31.75	0.09
1/2	RCF6-04-105	33.27	38.10	0.26
3/4	RCF6-06-105	38.10	44.45	0.40
1	RCF6-08-105	42.93	57.15	0.71
1-1/4	RCF6-10-105	45.97	63.50	0.59
1-1/2	RCF6-12-105	47.75	76.20	0.77
2	RCF6-16-105	50.80	91.95	2.23

**Fig. FCF6 – Thread Full Coupling, class 6000#**



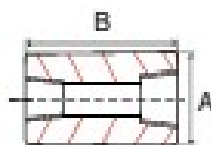
Size (in)	Part Number	A (mm)	B (mm)	Weight (kg)
1/8	FCF6-01-105	22.35	31.75	0.08
1/4	FCF6-02-105	25.40	35.05	0.13
3/8	FCF6-03-105	31.75	38.10	0.13
1/2	FCF6-04-105	38.10	47.75	0.34
3/4	FCF6-06-105	44.45	50.80	0.50
1	FCF6-08-105	57.15	60.45	0.87
1-1/4	FCF6-10-105	63.50	66.55	1.09
1-1/2	FCF6-12-105	76.20	79.25	1.94
2	FCF6-16-105	91.95	85.85	2.87

**Fig. HCF6 – Thread Half Coupling, class 6000#**



Size (in)	Part Number	A (mm)	B (mm)	Weight (kg)
1/2	HCF6-04-105	38.10	23.88	0.16
1	HCF6-08-105	57.15	30.23	0.45
1-1/2	HCF6-12-105	76.20	39.62	0.96
2	HCF6-16-105	91.95	42.93	1.76
2-1/2	HCF6-20-105	0	0	0

**Fig. RDF6 – Thread Reducing Coupling, class 6000#**



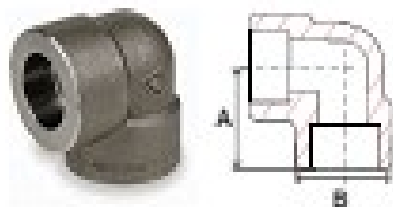
Size (in)	Part Number	A (mm)	B (mm)	Weight (kg)
1-1/2 x 1/2	RDF6-1204-105	76.20	79.25	1.20
1-1/2 x 3/4	RDF6-1206-105	76.20	79.25	1.87
1-1/2 x 1	RDF6-1208-105	76.20	79.25	0.99
2 x 1/2	RDF6-1604-105	91.95	85.85	4.20
2 x 1	RDF6-1608-105	91.95	85.85	3.40
2 x 1-1/2	RDF6-1612-105	91.95	85.85	3.40



# FORGED STEEL FITTING 6000#

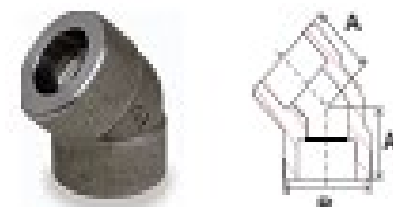
VIET THUONG

FORGED



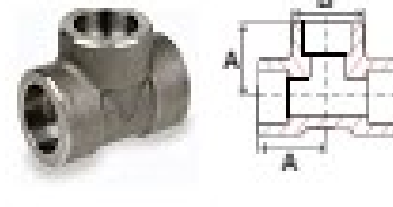
### Fig. SWLF6 – SW Elbow 90deg, class 6000#

Size (in)	Part Number	A (mm)	B (mm)	Weight (kg)
1/2	SWL6-04-105	28.70	33.78	0.36
3/4	SWL6-06-105	35.05	41.15	0.73
1	SWL6-08-105	39.62	49.78	1.13
1-1/4	SWL6-10-105	44.45	58.67	1.45
1-1/2	SWL6-12-105	50.80	66.55	2.77
2	SWL6-16-105	56.90	83.06	3.27



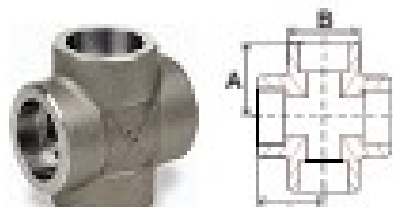
### Fig. SWL645 – SW Elbow 45deg, class 6000#

Size (in)	Part Number	A (mm)	B (mm)	Weight (kg)
1/2	SWL645-04-105	22.35	33.78	0.32
3/4	SWL645-06-105	26.92	41.15	0.54
1	SWL645-08-105	30.23	49.78	0.91
1-1/4	SWL645-10-105	33.27	58.67	1.09
1-1/2	SWL645-12-105	38.10	66.55	2.00
2	SWL645-16-105	44.20	83.06	2.09



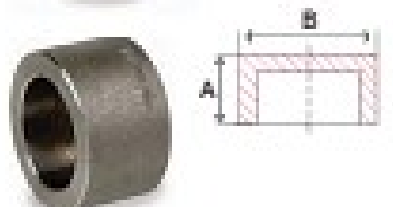
### Fig. SWT6 – SW Equal Tee, class 6000#

Size (in)	Part Number	A (mm)	B (mm)	Weight (kg)
1/2	SWT6-04-105	28.70	33.78	0.54
3/4	SWT6-06-105	35.05	41.15	0.91
1	SWT6-08-105	39.62	49.78	2.13
1-1/4	SWT6-10-105	44.45	58.67	1.91
1-1/2	SWT6-12-105	50.80	66.55	3.36
2	SWT6-16-105	56.90	83.06	3.95



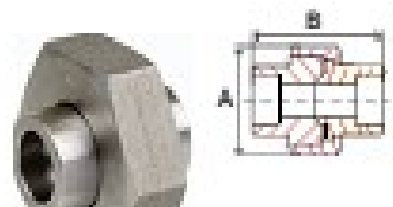
### Fig. SWX6 – SW Cross, class 6000#

Size (in)	Part Number	A (mm)	B (mm)	Weight (kg)
1/2	SWX6-04-105	28.70	33.78	0.73
3/4	SWX6-06-105	35.05	41.15	1.04
1	SWX6-08-105	39.62	49.78	1.77
1-1/2	SWX6-12-105	50.80	66.55	3.76
2	SWX6-16-105	56.90	83.06	7.17



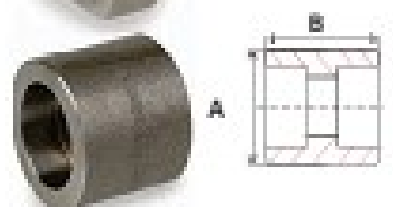
### Fig. SWC6 – SW Cap, class 6000#

Size (in)	Part Number	A (mm)	B (mm)	Weight (kg)
1/2	SWC6-04-105	20.57	33.78	0.14
3/4	SWC6-06-105	20.57	41.15	0.23
1	SWC6-08-105	23.88	49.78	0.32
1-1/4	SWC6-10-105	23.88	58.67	0.64
1-1/2	SWC6-12-105	25.40	66.55	0.91
2	SWC6-16-105	30.23	83.06	1.63



### Fig. SWU6 – SW Union, class 6000#

Size (in)	Part Number	A (mm)	B (mm)	Weight (kg)
1/2	SWU6-04-105	57.15	60.45	0.45
3/4	SWU6-06-105	61.98	69.85	0.45
1	SWU6-08-105	73.15	82.55	0.68
1-1/4	SWU6-10-105	76.20	88.90	2.95
1-1/2	SWU6-12-105	85.85	107.95	2.18
2	SWU6-16-105	103.12	130.05	2.18



### Fig. SWFC6 – SW Coupling, class 6000#

Size (in)	Part Number	A (mm)	B (mm)	Weight (kg)
1/2	SWFC6-04-105	28.96	33.78	0.23
3/4	SWFC6-06-105	35.05	41.15	0.23
1	SWFC6-08-105	38.10	49.78	0.41
1-1/4	SWFC6-10-105	38.10	58.67	0.59
1-1/2	SWFC6-12-105	38.10	66.55	1.09
2	SWFC6-16-105	50.80	83.06	1.59

FORGED



**Fig. TOL3 – Thread Outlet, 3000#**

Size (In)	Part Number	A (mm)	B (mm)	Weight (kg)
1/4 x 3/8 thru 36	TOL3-0203-105	19.05		0.0907
1/2 x 3/4 thru 36	TOL3-0403-105	25.40		0.0907
3/4 x 1 thru 1-1/4	TOL3-0608-105	26.92		0.1361
3/4 x 1-1/2 thru 36	TOL3-0612-105	26.92		0.1361
1 x 1-1/4 thru 2-1/2	TOL3-0810-105	33.27		0.1361
1 x 3 thru 36	TOL3-0822-105	33.27		0.2268
1-1/4 x 1-1/2	TOL3-1012-105	33.27		0.2268
1-1/4 x 2 thru 3-1/2	TOL3-1016-105	33.27		0.1361
1-1/4 x 4 thru 36	TOL3-1024-105	33.27		0.2268
1-1/2 x 2 thru 2-1/2	TOL3-1216-105	35.05		0.4082
1-1/2 x 3 thru 5	TOL3-1222-105	35.05		0.4082
1-1/2 x 6 thru 36	TOL3-1228-105	35.05		0.4082
2 x 2-1/2 thru 3-1/2	TOL3-1620-105	38.10		0.4082
2 x 4 thru 6	TOL3-1624-105	38.10		0.4082
2 x 8 thru 36	TOL3-1628-105	38.10		0.5443
2-1/2 x 3 thru 3-1/2	TOL3-2022-105	45.97		0.4082
2-1/2 x 4 thru 5	TOL3-2024-105	45.97		0.5443
2-1/2 x 6 thru 8	TOL3-2026-105	45.97		0.2722
2-1/2 x 10 thru 36	TOL3-2030-105	45.97		0.5443
3 x 3-1/2 thru 4	TOL3-2223-105	50.80		0.8618
3 x 5 thru 6	TOL3-2225-105	50.80		0.8618
3 x 8 thru 14	TOL3-2228-105	50.80		0.8618
3 x 16 thru 36	TOL3-2236-105	50.80		0.8618
4 x 5 thru 6	TOL3-2425-105	57.15		0.8618
4 x 8 thru 10	TOL3-2428-105	57.15		1.1793
4 x 12 thru 20	TOL3-2432-105	57.15		1.1793
4 x 22 thru 36	TOL3-2446-105	57.15		1.1793

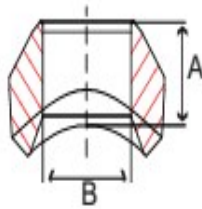


**Fig. SOL3 – Socket Outlet, 3000#**

Size (In)	Part Number	A (mm)	B (mm)	Weight (kg)
1/2 x 3/4 thru 36	SOL3-0406-105	25.65		0.0907
3/4 x 1 thru 1-1/4	SOL3-0608-105	28.70		0.0907
3/4 x 1-1/2 thru 36	SOL3-0612-105	28.70		0.0907
1 x 1-1/4 thru 2-1/2	SOL3-0810-105	35.05		0.2268
1 x 3 thru 36	SOL3-0822-105	35.05		0.2268
1-1/4 x 1-1/2	SOL3-1012-105	35.05		0.3629
1-1/4 x 2 thru 3-1/2	SOL3-1016-105	35.05		0.3629
1-1/4 x 4 thru 36	SOL3-1424-105	35.05		0.3629
1-1/2 x 2 thru 2-1/2	SOL3-1216-105	36.58		0.4536
1-1/2 x 3 thru 5	SOL3-1222-105	36.58		0.4536
1-1/2 x 6 thru 36	SOL3-1226-105	36.58		0.4536
2 x 2-1/2 thru 3-1/2	SOL3-1620-105	39.62		0.7711
2 x 4 thru 6	SOL3-1624-105	39.62		0.7711
2 x 8 thru 36	SOL3-1628-105	39.62		0.7711
2-1/2 x 3 thru 3-1/2	SOL3-2022-105	41.15		1.1340
2-1/2 x 4 thru 5	SOL3-2024-105	41.15		1.1340
2-1/2 x 6 thru 8	SOL3-2026-105	41.15		1.1340
2-1/2 x 10 thru 36	SOL3-2030-105	41.15		1.1340
3 x 3-1/2 thru 4	SOL3-2223-105	45.97		1.8144
3 x 5 thru 6	SOL3-2225-105	45.97		1.8144
3 x 8 thru 14	SOL3-2228-105	45.97		1.8144
3 x 16 thru 36	SOL3-2236-105	45.97		1.8144
4 x 5 thru 6	SOL3-2425-105	49.28		2.8576
4 x 8 thru 10	SOL3-2428-105	49.28		2.8576
4 x 12 thru 20	SOL3-2432-105	49.28		2.8576
4 x 22 thru 36	SOL3-2446-105	49.28		2.8576

Fig. WOL3 – Weld Outlet, 3000#

FORGED



Size (In)	Part Number	A (mm)	B (mm)	Weight (kg)
1/2 x 1	WOL3-0408-105	19.05	13.84	0.1361
1/2 x 1-1/4 thru 36	WOL3-0410-105	19.05	13.84	0.1361
3/4 x 1 thru 2	WOL3-0608-105	22.35	18.87	0.1361
3/4 x 2-1/2 thru 36	WOL3-0620-105	22.35	18.87	0.1361
1 x 1-1/4 thru 1-1/2	WOL3-0810-105	26.92	24.31	0.2722
1 x 2 thru 36	WOL3-0816-105	26.92	24.31	0.2722
1-1/4 x 1-1/2 thru 2	WOL3-1012-105	31.75	32.51	0.4082
1-1/4 x 2-1/2 thru 6	WOL3-1020-105	31.75	32.51	0.4082
1-1/4 x 8 thru 36	WOL3-1028-105	31.75	32.51	0.4082
1-1/2 x 2 thru 3-1/2	WOL3-1216-105	33.27	38.15	0.6350
1-1/2 x 4 thru 36	WOL3-1224-105	33.27	38.15	0.6350
2 x 2-1/2 thru 3	WOL3-1620-105	38.10	49.23	1.0433
2 x 3-1/2 thru 6	WOL3-1623-105	38.10	49.23	1.0433
2 x 8 thru 36	WOL3-1628-105	38.10	49.23	1.0433
2-1/2 x 5 thru 10	WOL3-2025-105	41.15	58.98	1.3154
2-1/2 x 12 thru 36	WOL3-2032-105	41.15	58.98	1.0433
3 x 5 thru 6	WOL3-2225-105	44.45	73.66	1.9504
3 x 8 thru 14	WOL3-2228-105	44.45	73.66	1.9504
3 x 16 thru 36	WOL3-2236-105	44.45	73.66	1.9504
4 x 8 thru 10	WOL3-2428-105	50.80	97.18	3.2205
4 x 12 thru 20	WOL3-2432-105	50.80	97.18	3.2205
4 x 22 thru 36	WOL3-2446-105	50.80	97.18	3.2205

Noted: All Butt Weld Outlet have Schedule 80 bore

**VIET THUONG INDUSTRIAL COMPANY LIMITED.**